



®

***f.a.i***

# **ANTARES II**

## **Instruction Manual**

**Model:**

**ANTARES II**

### **ATTENTION**

This instruction manual contains important information about the installation and use of the projector. Please read and follow these instruction carefully.

### **ATTENTION**

Always ensure that the power to the project is disconnected before opening the projector or commencing any maintenance work.

## TABLE OF CONTENTS

|                                      |   |
|--------------------------------------|---|
| 1. SAFE USAGE OF THE PROJECTOR ----- | 3 |
| 2. GETTING STARTED -----             | 3 |
| 3. INSTALLING THE PROJECTOR -----    | 4 |
| 4. CONNECTIONS -----                 | 4 |
| 5. PROJECTOR ADDRESS -----           | 5 |
| 6. SYSTEM DIAGRAM EXAMPLES -----     | 5 |
| 7. DMX TABLE -----                   | 6 |
| 8. TROUBLESHOOTING -----             | 6 |
| 9. TECHNICAL SPECIFICATIONS -----    | 6 |

## 1 - SAFE USAGE OF THE PROJECTOR

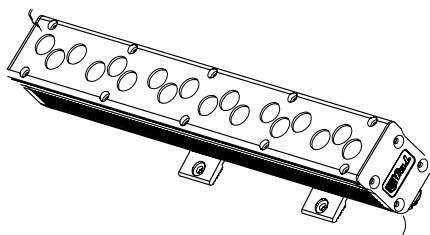
- Disconnect power before opening.
- Do not attempt to dismantle and modify the projector.
- Do not allow contact with water or any other fluids, or metallic objects.
- Do not install the projector in areas of high humidity.
- Not allowed to be mounted directly on inflammable surfaces.
- Keep at least 0.5 meter distance between the projector and adjacent inflammable surfaces.
- The lighting apparatus must be used only with its protective shield.
- Protective grill, lenses, U.V. filters should be replaced if they are visibly damaged to the point at which their effectiveness is diminished, for example by becoming cracked or deeply scratched.
- Keep at least 5 meters between the lamp and the illuminated surface.
- To ensure the reliability of the projector, it is recommended to clean projector every 15 days. In locations such as discotheques the objective lens should be cleaned every week as smoke fluid can condense on it and very quickly reduce the light output.

## 2 - GETTING STARTED

In this section you will find some brief steps to follow to start using immediately the projector. These few instructions are essential for connecting and supplying the projector, but do not exhaust the several functions the apparatus is capable to do.

You are strongly invited to read the rest of this instructions manual once installed the projector, so as to get more insight and acquire full control on the fixture functionalities. For further deepening on single steps, you are send back to the relevant section, indicated in the brackets.

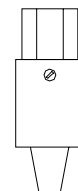
Open the shipping carton and verify that all equipment necessary to operate the system has arrived intact. Refer to the following packing list for information on what items are included with your model. If any equipment is missing or damaged, contact your f.a.l. dealer immediately.



1\* ANTARES II



1\* Instruction manual

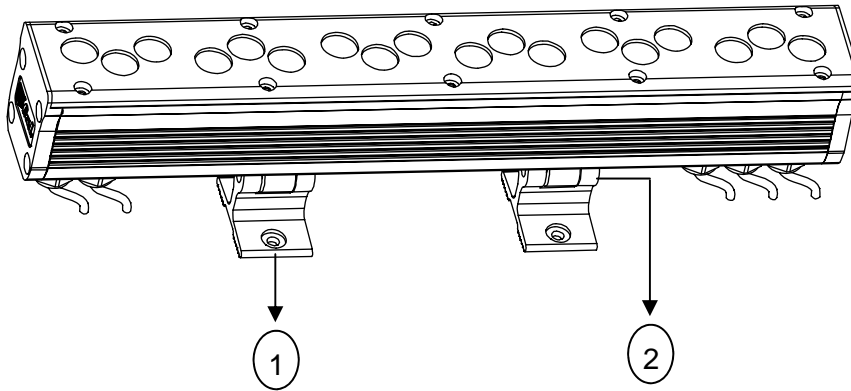


1\* Power connector

Before beginning initial setup of your ANTARES II, make sure that there is no evident damage caused by transportation. In the event that the unit's housing or cable is damaged, do not plug it in and do not attempt to use it until after contacting your f.a.l. dealer for assistance.

### 3 - INSTALLING THE PROJECTOR

The Projector should be mounted via its feet (1) using at least two M6 size screws. Always ensure that the structure to which you are attaching the projector is secure and is able to support a weight of ANTARES II (2.3kg). The projector feet allows an angle adjustment of +/- 180°. And, once positioned, the knuckle (2) should be firmly tightened.



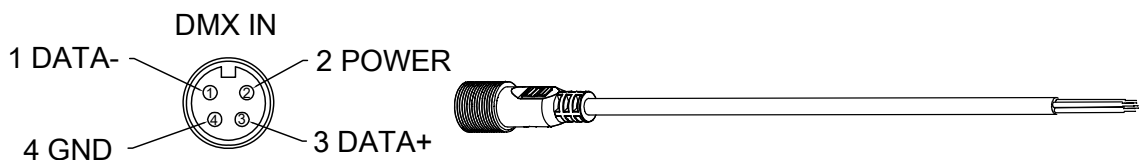
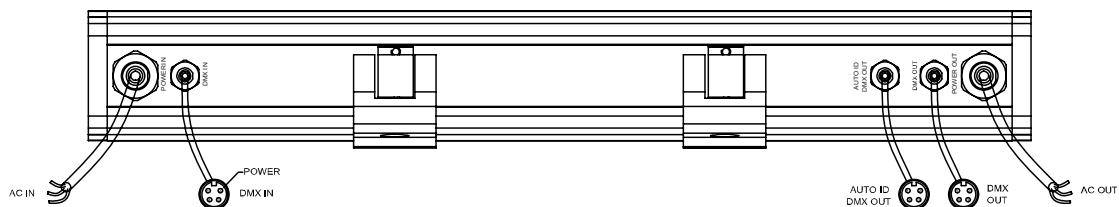
### 4 - CONNECTIONS

#### MAINS CONNECTION:

Please pay attention to the voltage and frequency marked on the back panel of the projector. It is recommended that each projector is supplied separately so that they may be individually switched on and off.

It is essential that each projector is correctly earthed and that electrical installation conforms to all relevant standards. Power consumption of the ANTARES II is 21W.

**NOTE: The Earth must be connected.**



#### DMX 512 CONNECTION:

The ANTARES II accepts digital control signal in DMX 512 format. Connection between controller and projector and between one projector and another must be made with 4 core DMX waterproof cable, with each core having at least 0.5mm<sup>2</sup> cross section. The 4 core DMX waterproof cable is as shown in above diagram.

**NOTE: Make sure that none of the connections touch the body of plug or each other. The body of the plug is not connected anyway.**

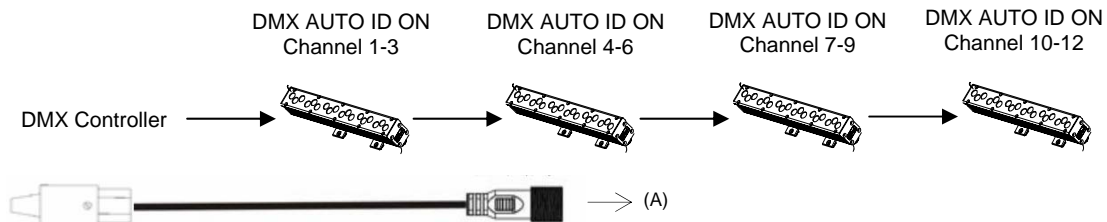
## 5 - PROJECTOR ADDRESS

The ANTARES II is controlled with 3 channels. Each projector must be given a digital start address number so that the correct projector responds to the correct control signals. The digital start address is the channel number from which the projector starts to “listen” to the digital control information being sent out from the controller. This digital encoding must be done on each projector.

The ANTARES II has one very advanced feature: AUTO ID function. It means that the ANTARES II can obtain its own unique address automatically from the DMX chain without manually address DMX channel. Please refer to **SYSTEM DIAGRAM EXAMPLES** section.

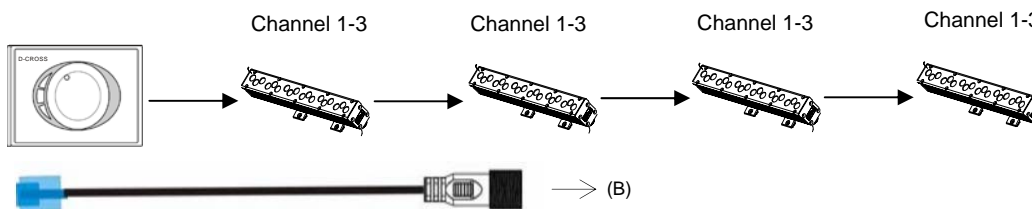
## 6 - SYSTEM DIAGRAM EXAMPLES

### 6.1 AUTO ID (DMX) ADDRESSING



DMX console connect ANTARES II via DMX cable (A), which is optional in package service.

### 6.2 SAME ID (DMX) ADDRESSING



D-CROSS connect ANTARES II via 5M 4 core DMX waterproof cable (B), which is optional in package service.

Cable A and B is alternative for you. Please inform us your request when place order.

## 7 - DMX TABLE

| CHANNEL   | FUNCTION              | CHANNEL   | FUNCTION             |
|-----------|-----------------------|-----------|----------------------|
| Channel 1 | Red dimmer 0 - 100%   | Channel 3 | Blue dimmer 0 – 100% |
| Channel 2 | Green dimmer 0 - 100% |           |                      |

## 8 - TROUBLESHOOTING

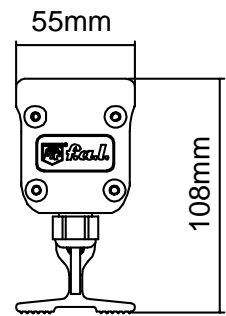
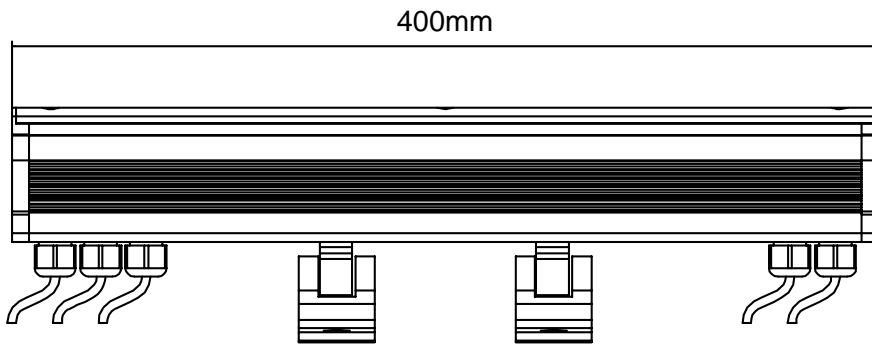
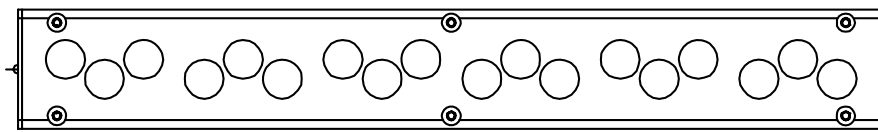
To ensure the reliability of the spotlight it should be kept clean. It is recommended clean every 15 days with compressed air and in case of more resistant dirt with one soft brush.

Shall any malfunction occurred, please try following solutions.

| PROBLEM  | POSSIBLE SOLUTION   |
|--|---|
| The ANTARES II does not start                      | Check the power connections   |
| The ANTARES II does not respond to the controller  | Check the DMX cable connections, DMX address, Auto ID and signal indication LED status. Make sure that they are all proper addressed. |
| The ANTARES II does not work or work not properly. | Check the DMX cable connections and DMX address. Make sure that the spotlight is not in the demo or sound activated mode.             |
| Color does not match the assigned channel.         | Check the DMX channel related color.  |

## 9 - TECHNICAL SPECIFICATIONS

|                              |                                     |
|------------------------------|-------------------------------------|
| Power Supply:                | 110/ 220V, 50/60Hz                  |
| Power Consumption:           | 21W                                 |
| LED Power:                   | 18W power consumption in full R/G/B |
| LED Source:                  | 18 * 1W R/G/B LED                   |
| Luminous flux:               |                                     |
| Optional Optics:             | 50°                                 |
| DMX Channel                  | 3 channels                          |
| Maximum Ambient Temperature: | 0°C to 60°C                         |
| Maximum Housing Temperature: | 60°C                                |
| Chassis Material:            | Die cast aluminum body              |
| Protection:                  | IP66                                |
| Dimension (L * W * H):       | 400mm * 55mm * 108mm                |
| Weight:                      | 2.3Kg                               |



f.a.I. (China)

Sanecore Science & Technology Industry Park, Jiuwei Village, XiXiang Town, ShenZhen, China 518102  
Tel:+86 755 2748 3618 Fax:+86 755 2997 5508 E-mail: fal@iagmacao.com Website: www.fal.it